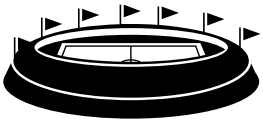


# Colorado Residents with Intellectual/ Developmental Disabilities

## NEED HOUSING NOW!

**127,000**

People in Colorado have an I/DD



That is more people than Empower Field at Mile High can hold!



**73%**

Live with their family, but their family is aging.



**~20,000**



live with a caregiver over the age of 60. They need housing and supports in place.

## What happens when family caregivers can no longer provide housing or support?

Without access to affordable, accessible housing, people with I/DD either:



Displaced into "next empty bed" of a provider controlled home



Experience homelessness

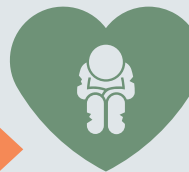
Ultimately costing taxpayers more than providing the subsidies needed for someone to live in their own home!

Provider-Controlled Setting



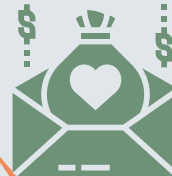
**== \$5,900/ month**

Cost of Homeless



**== \$3,600/ month**

Housing subsidy & drop-in services as needed



**== \$2,000/ month**

Avg Total Monthly Income of Residents with I/DD

**\$900**

Fair Market Rent for Studio in Colorado

**\$1,154**

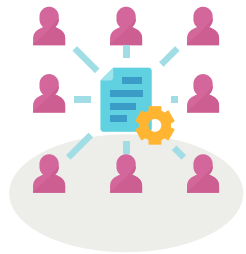
**50%**

of residents with I/DD prefer to access services in one's own home, is more person-centered and often costs taxpayers less!

# What can our Colorado elected officials and state leaders do to help prevent the trauma of displacement for thousands of residents with I/DD?

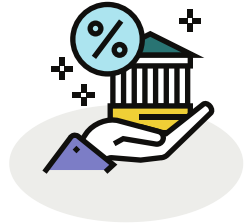
1

**CREATE** a working group to develop a blueprint for how Colorado will meet the needs of its neurodiverse residents. This working group should include members of the Department of Housing, Department of Local Affairs, Colorado Housing and Finance Authority, as well as representation from all Community Centered-Boards and Healthcare, Policy & Finance.



2

**DEVELOP** loan programs and tax incentives for individuals with I/DD and their families to help purchase or bequeath a home for their dependent loved one.



3

**CREATE** a .02% increase in the general tax base or direct taxes from a specific source to fund residential services for individuals with I/DD.



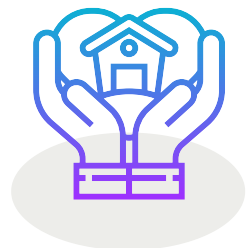
4

**REQUIRE** state-contracted managed healthcare organizations to contribute a small portion of profits to fund the development of supportive housing solutions.



5

**MAKE** individuals with I/DD a prioritized population for Colorado's Housing Trust Fund, programs supporting affordable housing development or permanent rental subsidies.



<https://www.IHCcolorado.org/>